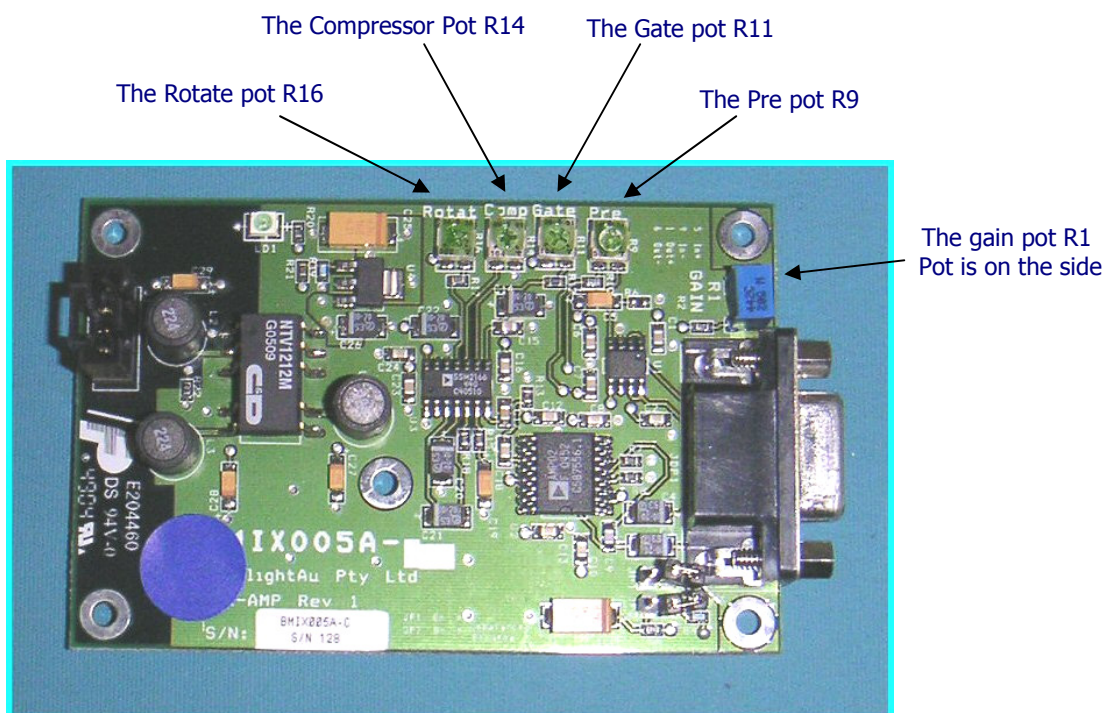


DREAM

Talkback Adjustments for the new BMIX005A

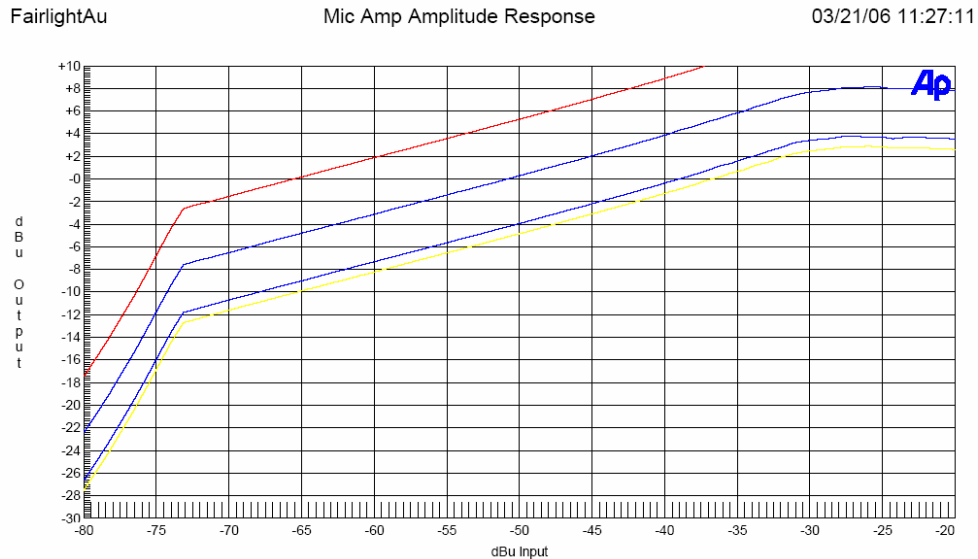


Mic-Pre amp setup

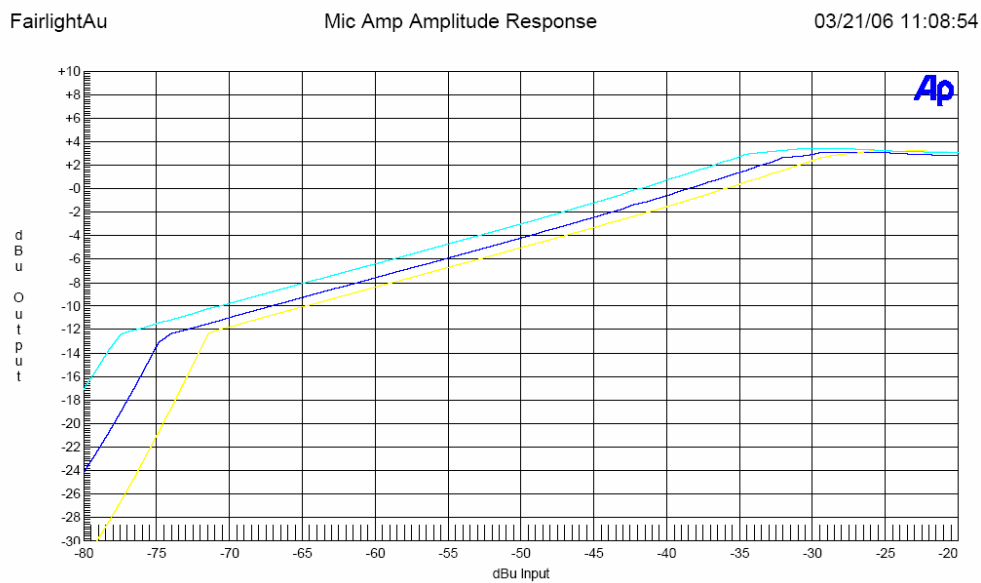
As can be seen from the plots on the next page, each setting may affect some or all of the other settings. It is usual therefore to set each pot in order.

1. Gain
2. Pre
3. Rotate (Limiter)
4. Compressor
5. Gate

1. **The gain pot R1.** Mounted vertically controls the overall gain of the amp AFTER gating and limiting please refer to diagram below. Adjusting the gain pot moves the entire plot up or down the dB output scale. Note the plot does not show the effect on noise, it is quite usual for the gain pot to be at its low end stop after factory preset.



2. **The Pre pot R9.** Please refer to the diagram below, this has the effect of sliding the plot left and right along the dB input scale. This moves the gate point, but not the limiter point. Compressor ratio is also unaffected.

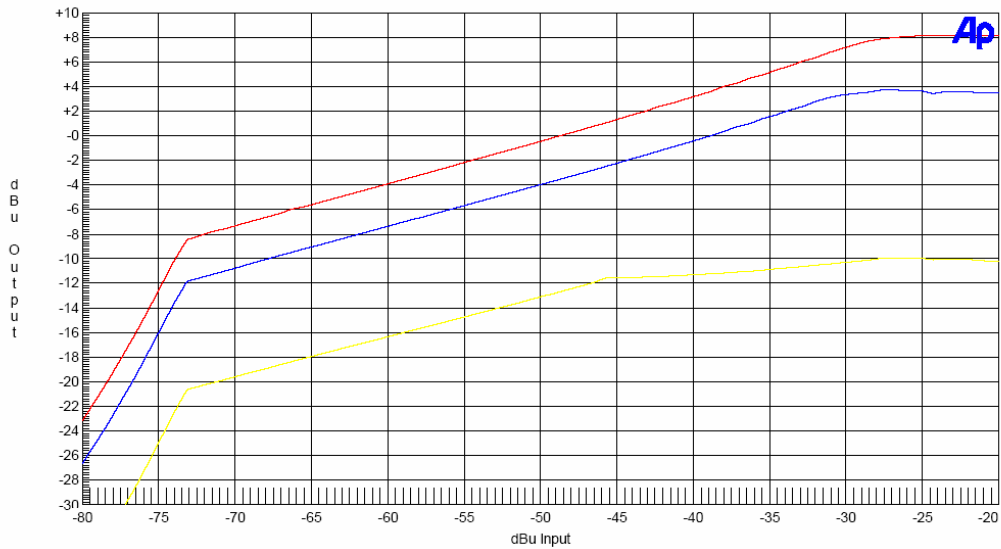


3. **The Rotate pot R16** – or limiter point. Please refer to the diagram below. The limiter point is moved along the dB output scale, but overall gain is also affected. Gate and Compressor ratio are not affected. The rotate pot is extremely sensitive, +3dB is often very near the end of it's travel.

FairlightAu

Mic Amp Amplitude Response

03/21/06 11:22:24

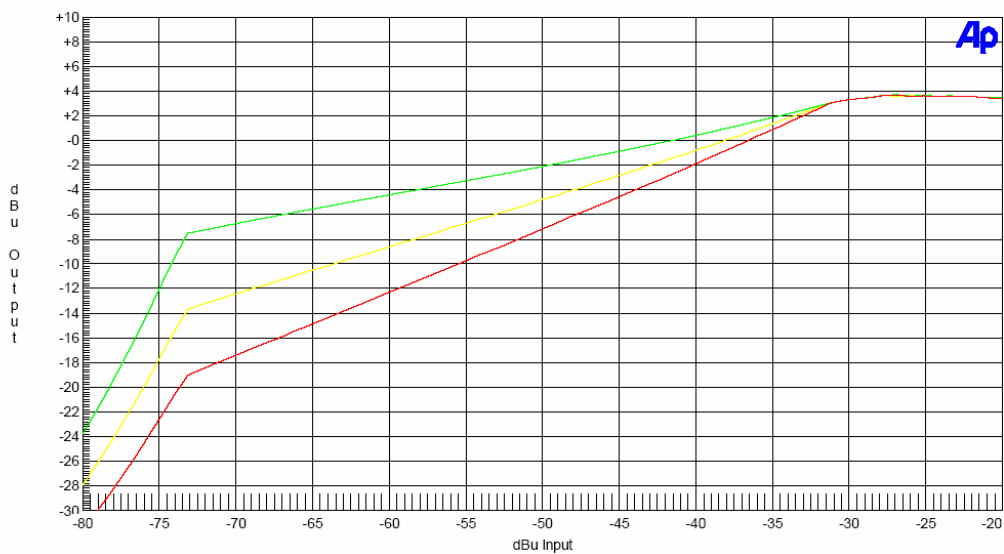


4. **The Compressor Pot R14.** Please refer to the diagram below. The compressor ratio can be altered without effecting limiter or gate points.

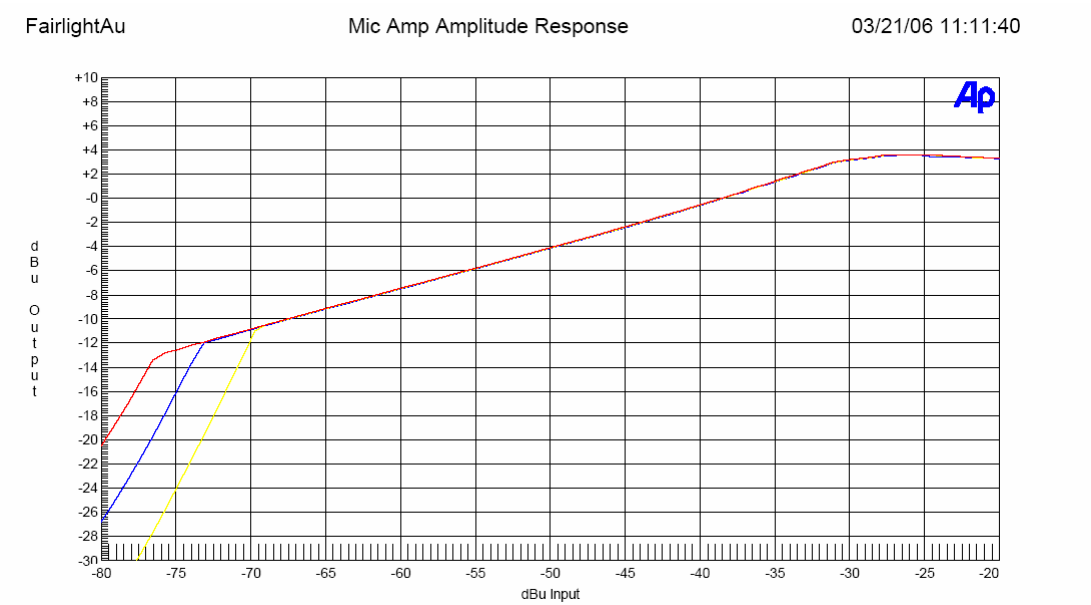
FairlightAu

Mic Amp Amplitude Response

03/21/06 11:17:55



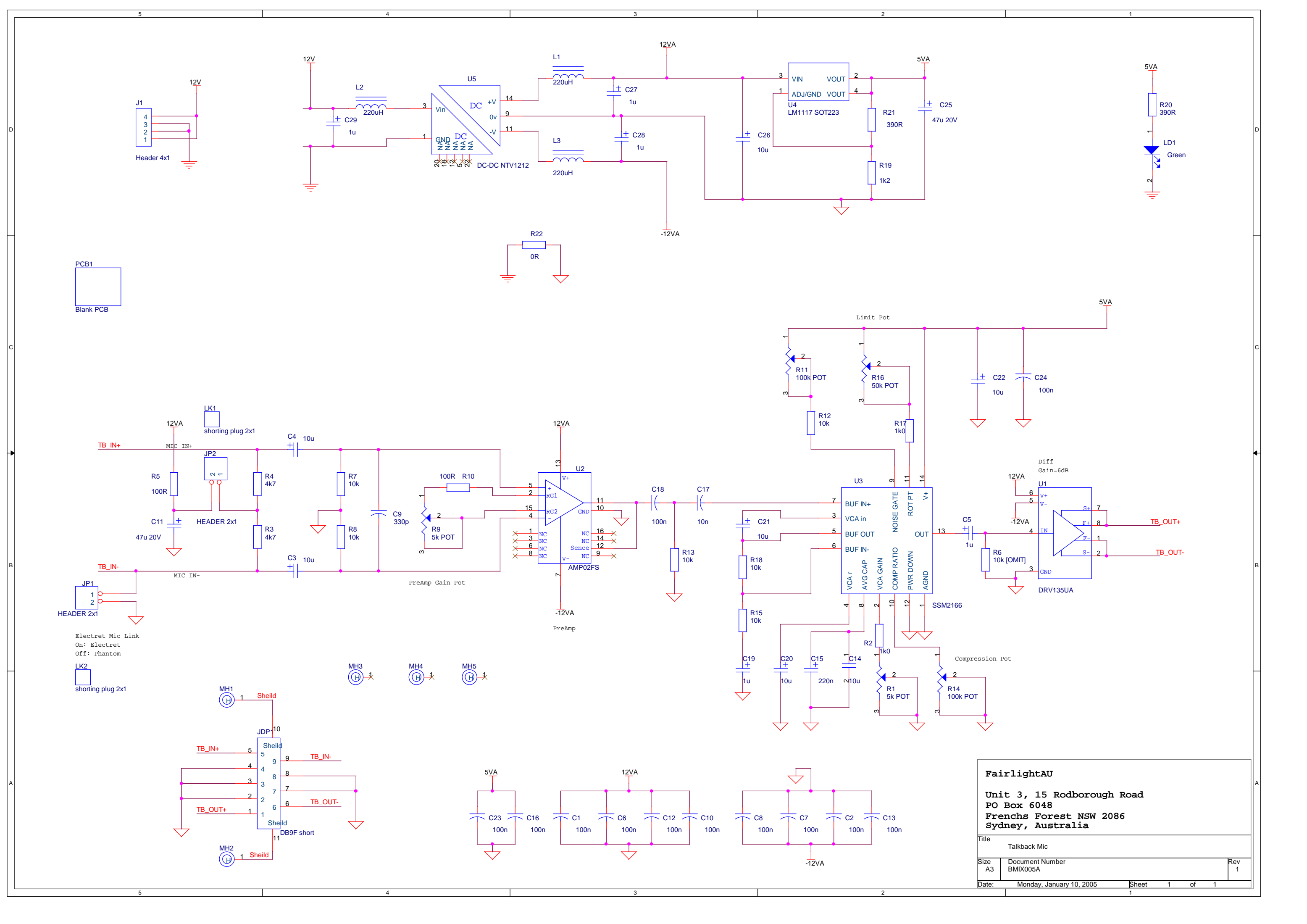
5. **The Gate pot R11.** Please refer to the diagram below. The gate point can be moved along the dB input scale.



A Schematic is available on the next page ...

Happy Tuning !

Chris Pickard / Joe Hammer
FairlightAU - March 06



PCB1
Blank PCB

Electret Mic Link
On: Electret
Off: Phantom

FairlightAU		
Unit 3, 15 Rodborough Road PO Box 6048 Frenchs Forest NSW 2086 Sydney, Australia		
Title	Talkback Mic	
Size	Document Number	Rev
A3	BMIX005A	1
Date:	Monday, January 10, 2005	Sheet 1 of 1